

Trimming Methods Used

Above are a few of the trimming methods used by EPL when performing line clearance. Please keep in mind when performing line clearance, the main focus is to maintain proper clearances from EPL facilities for both safety and outage reasons. EPL does not “shape” trees for aesthetics.

Storm Damaged Trees

Storm debris that falls on the lines or equipment will be cleared from the electrical equipment to restore power as quickly as possible, but all debris will remain on the customer’s property and no clean-up will be performed after. Please DO NOT attempt to remove anything from the power lines unless it is deemed clear by EPL. Please also keep in mind that should a tree fall and cause damage to your service riser or meter base, you will need to make repairs prior to reconnection of service.



Edinburgh Power & Light – Tree Trimming FAQs

Still got questions?

If you still have questions or would wish to talk to someone, please reach out to the utility office. We will be happy to answer your questions.



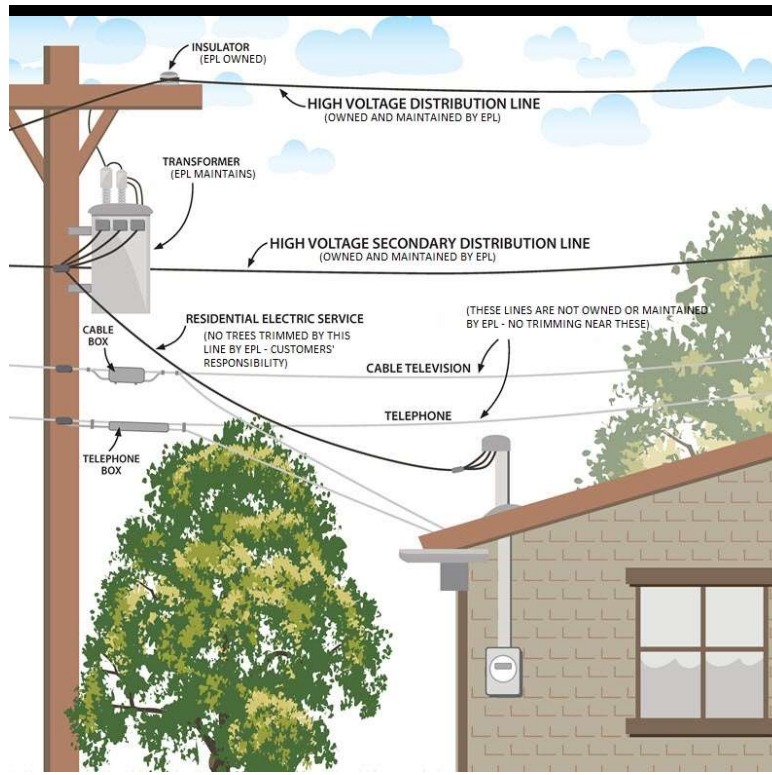
107 South Holland Street
Edinburgh, IN 46124-0065
Phone: [812-526-3514](tel:812-526-3514)

Why do we trim trees?

Tree trimming and line clearance are a key part of our maintenance cycle. The goal is to help accomplish and maintain electrical safety & reliability for our customers. Weather like lightning, ice, and high winds can cause trees to fall or make contact with our overhead power lines and result in an outage. As part of our ongoing preventative maintenance program, we identify areas in our system that need to have trees and limbs cleared away from pole-to-pole power lines.

Who to Contact?

If you have a tree that is in contact or vicinity of EPL lines or equipment, please contact the utility office during normal business hours to submit a work order. EPL will review the work order and assess the work needed. If work is required by EPL, it will be scheduled to take place. Please do not attempt to remove it until it is deemed safe to do so by EPL.



What lines are EPL responsible for?

EPL maintains and trims around its main lines between poles (High Voltage Distribution Lines not necessarily Secondary Distribution Lines).

The customer is responsible for trimming and clearing any trees from service wires to their premises (To assist you in maintaining the service drop, EPL will disconnect the electric service so that you or your contractor can safely do the work. This service is provided to you at no charge. Please make your request at least two working days in advance and weather permitting.)

Tree Removal or Trimming Considerations

EPL is required to maintain a minimum distance between tree limbs, energized wires, and equipment. To keep this clearance, we:

- Consider how much the tree will grow between now and the next trim cycle. Slower-growing trees require less trimming than faster-growing trees.
- Plan for weather conditions. We evaluate if strong winds will cause the tree to make contact with the wires and if movement in the wires, such as sagging due to high temperatures or the weight of ice, could cause the wires to contact the tree.
- Consider the impact of trimming on the overall health and stability of the tree.
- If the tree is in the street right-of-way or a utility easement, the utility crew may remove the tree at its discretion.